



+



+



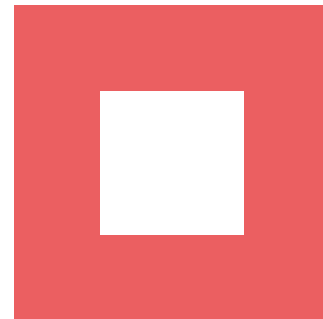
# Connect High School



**An Early College High School Option for Students & Families**



+





# Welcome and Introductions



## CONNECT ADMINISTRATION

Michelle Rainey  
Executive Director  
mrainey@davincischools.org

Marc Pioch  
HS/DVX Principal  
mpioch@davincischools.org

Dr. Kimberly Johnson  
HS/DVX Assistant Principal  
kjohnson@davincischools.org

Kaitin Toon  
K-8 Principal  
ktoon@davincischools.org

Tami Christopher  
K-8 Assistant Principal  
tchristopher@davincischools.org

## ENROLLMENT



Carla Levenson  
Director of External Relations  
clevenson@davincischools.org

Fabiola Martin  
Enrollment Coordinator  
enrollment@davincischools.org

Jacob Diaz  
DV Connect Enrollment  
jdiaz@davincischools.org



# Meet Your Staff!



**Alejandra, Nicole and \_\_\_\_\_  
Math Teachers**



**Jared, Letha and \_\_\_\_\_  
English Teachers**



**Daniel and \_\_\_\_\_  
Social Studies  
Teachers**



**Alexandra  
Inclusion  
Specialist**



**Ayala, Kevin and Tina  
Science Teachers**



**Erin, Kené and Sylvia  
Counselors**



**Lori  
Real World  
Learning  
Coordinator**



**Susie, Evan, \_\_\_\_\_ and \_\_\_\_\_  
Academic Coaches**



**Ebony, Hilary and Jacob  
Office Staff**



**Larri, Renato and Fernando  
Campus Safety & Maintenance**

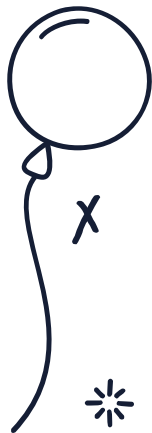


**Lauren  
DVX College  
Mentor**



**Kimberly, Marc and Michelle  
Administrative Staff**

# Agenda



**01**

## **Vision & Purpose**

High School and College  
Habits of Heart and Mind

**02**

## **Schedule**

Classes, office hours,  
asynchronous work

**03**

## **Community**

Building Community,  
Sports, Extracurricular

**04**

## **Enrollment/Q & A**

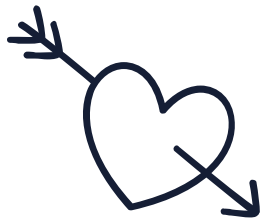
What questions do you still  
have?





## DV CONNECT

**Da Vinci Schools' rigorous, hybrid, early college program in which students earn an AA or BA through SNHU or 60 units of transferable credits for free, all while earning their high school diploma.**



# What We Do

DV Connect is a rigorous, early college high school option that seeks to provide **equity** and **access** to higher education (aka college) for **ALL students**. We accomplish this with wrap around supports including office hours, individualized counseling and personalized experiences meant to build confidence and knowledge in navigating the college experience and curriculum, all while earning a high school diploma.

To further enhance the experience, our program reflects a typical college schedule in which students spend 2 days on campus each week with the expectation that students work independently, with support, the other 3 days at home. Supports include virtual office hours, access to campus on home days, curriculum and assignments provided by teachers and more.

Students will earn an AA degree in General Studies with an emphasis in Business from Southern New Hampshire University while completing A-G certified high school graduation requirements. In students' senior year, they may choose to continue with SNHU to pursue their bachelor's degree or focus on transferable general education requirements through our partnerships with El Camino College and UCLA Extension.

After 12<sup>th</sup> grade, students are eligible to apply to any 4-year university of their choosing and enter as a college freshmen with some college credits or they can extend their time with Da Vinci by enrolling in Da Vinci Extension, where students can complete their BA Degree from SNHU or complete up to 60 transferable units (20 classes) through El Camino, all at no cost to students and their families. *(Guests, what stands out to you?)*



## High School

Earn your High School Diploma without the empty calories

## Vision and Purpose

### College

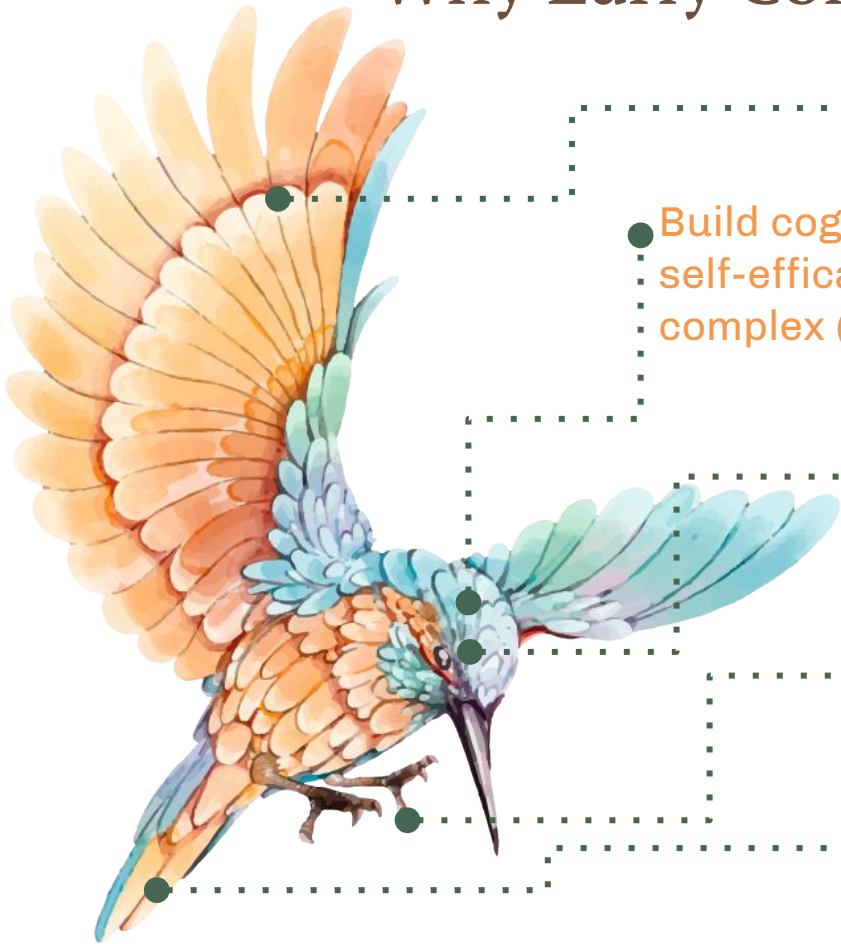
Earn your AA or BA Degree and transfer credits for \*free



## Habits of Heart & Mind

Build the skills to be a successful, productive, and happy human being

# Why Early College? Why SNHU?



It is *NOT* just about transferability...  
(where will these wings take me *now*?)

Build cognitive, executive functioning and SEL skills:  
self-efficacy, resourcefulness, agency, grit, navigate  
complex (and even tedious) systems...

Optics: honors/GPA boost, college on  
transcript, HS + college credit, "I'm college  
material," resume & application

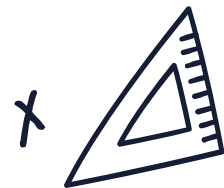
Latch on to rigorous work, pull it apart,  
take it with you and apply towards  
future learning/work...

Supporting future upward lift





# Program Components

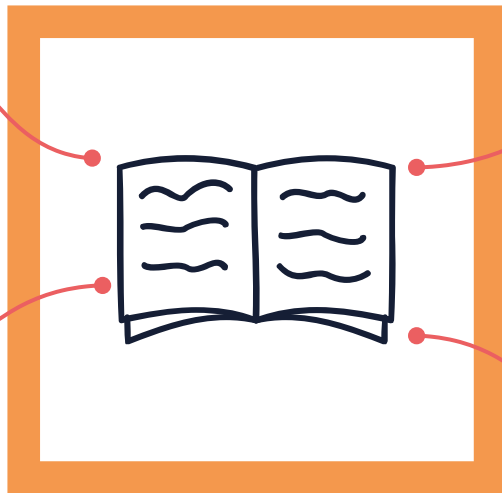


**Early  
College**

**Hybrid  
Learning**

**Real  
World  
Learning**

**Social  
Emotional  
Learning**





## **WHY EARLY COLLEGE?**

**DV Connect students begin  
their college journey in 9th grade with  
Southern New Hampshire University**

**Two pathways emerge in 12th grade: Continue SNHU  
(bachelor's degree) or begin El Camino College and UCLA  
Extension for transferable classes.**

**All at no cost to families!**



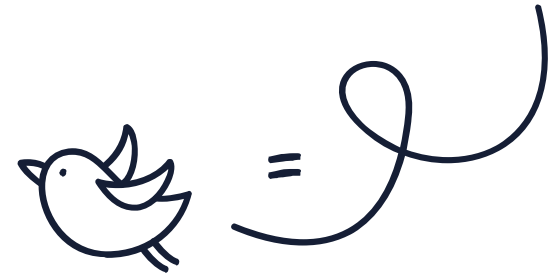


## WHY HYBRID LEARNING?

**We believe in the best of both worlds!**

**Students benefit from an on-campus community of  
peers and staff 2 days per week**

**and remote, asynchronous learning 3 days per week.**





## **WHY REAL WORLD LEARNING?**

**Students learn best when their work reflects the world around them.**

**We contextualize student learning through workforce competencies, inquiry based learning, financial literacy and industry partnerships.**



# WHY SOCIAL EMOTIONAL LEARNING?

Students need to be  
known, seen and heard to thrive as learners.  
Connect High's unique social emotional learning  
philosophy is reflected in our  
Habits of Heart and Mind.



# EARLY COLLEGE SUCCESS DATA



- **SNHU Business Course - 91 total 9th graders took classes**
  - 95% of all 9th graders mastered a college assignment or competency
  - 86% of all 9th graders mastered 3 competencies which is equivalent to 1 college course
  - 66% of all 9th graders mastered 2 college course or goals which is the minimum required by SNHU per trimester
  - 40% of all 9th graders mastered all 3 college courses!
- **UCLA Extension Statistics Math Pilot Class**
  - 18 Students took the course (17 - 11th graders and 1 - 10th)
  - 8 earned an A, 7 earned a B and 3 earned a C

## **DV CONNECT STUDENT PROFILE**

- **Seeking a Da Vinci Schools educational experience**
- **Autonomous learner (manage asynchronous learning)**
- **Desiring a rigorous early college experience**
- **Not afraid to ask for help (build agency)**
- **Wanting flexibility to pursue passions & explore career interests**

# Key DV Connect HS Elements



**Independent  
Study**



**Asynchronous  
Learning**



**Learning Logs**



**Mastery Based  
Grading**



**Extracurriculars**

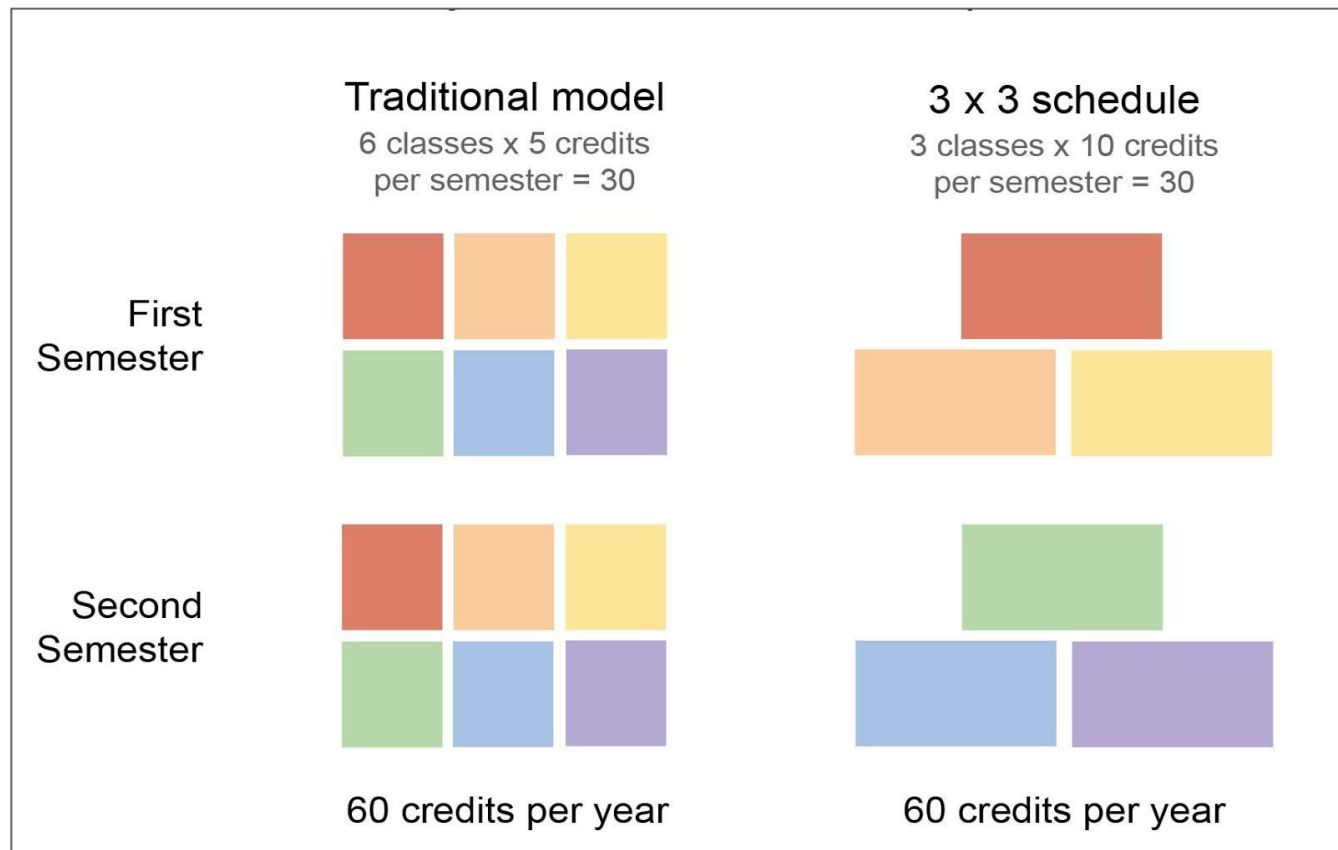


**Signature  
Practices  
SLCs, POLs,  
Exhibition**



# DV Connect High: 3x3 Model Explained

In the Da Vinci Connect High School 3x3 schedule, students earn the same number of credits per year as in the traditional 6 period schedule. Here's how:



# DV Connect High: 4-Year Course Sequence

## 9th Grade Semester 1

English 9 (Goal 3)  
Algebra 1/Physics  
SNHU College Classes  
SNHU Goal 1, 2

## 9th Grade Semester 2

Physics/Algebra 1  
SNHU College Classes  
SNHU Goal 4,5,6  
Tech Experience

## 10th Grade Semester 1

World History (Goal 7,8)  
Chemistry/Algebra 2  
SNHU College Classes  
SNHU Goal 9, 10

## 10th Grade Semester 2

English 10  
Algebra 2/Chemistry  
SNHU College Classes  
SNHU Goal 12, 13, 14

## 11th Grade Semester 1

English 11 (Goal 11)  
Geometry/Biology  
Economics (Goal 15,18,20)

## 11th Grade Semester 2

US History  
Biology/Geometry  
SNHU College Classes  
SNHU Goal 16, 17, 19

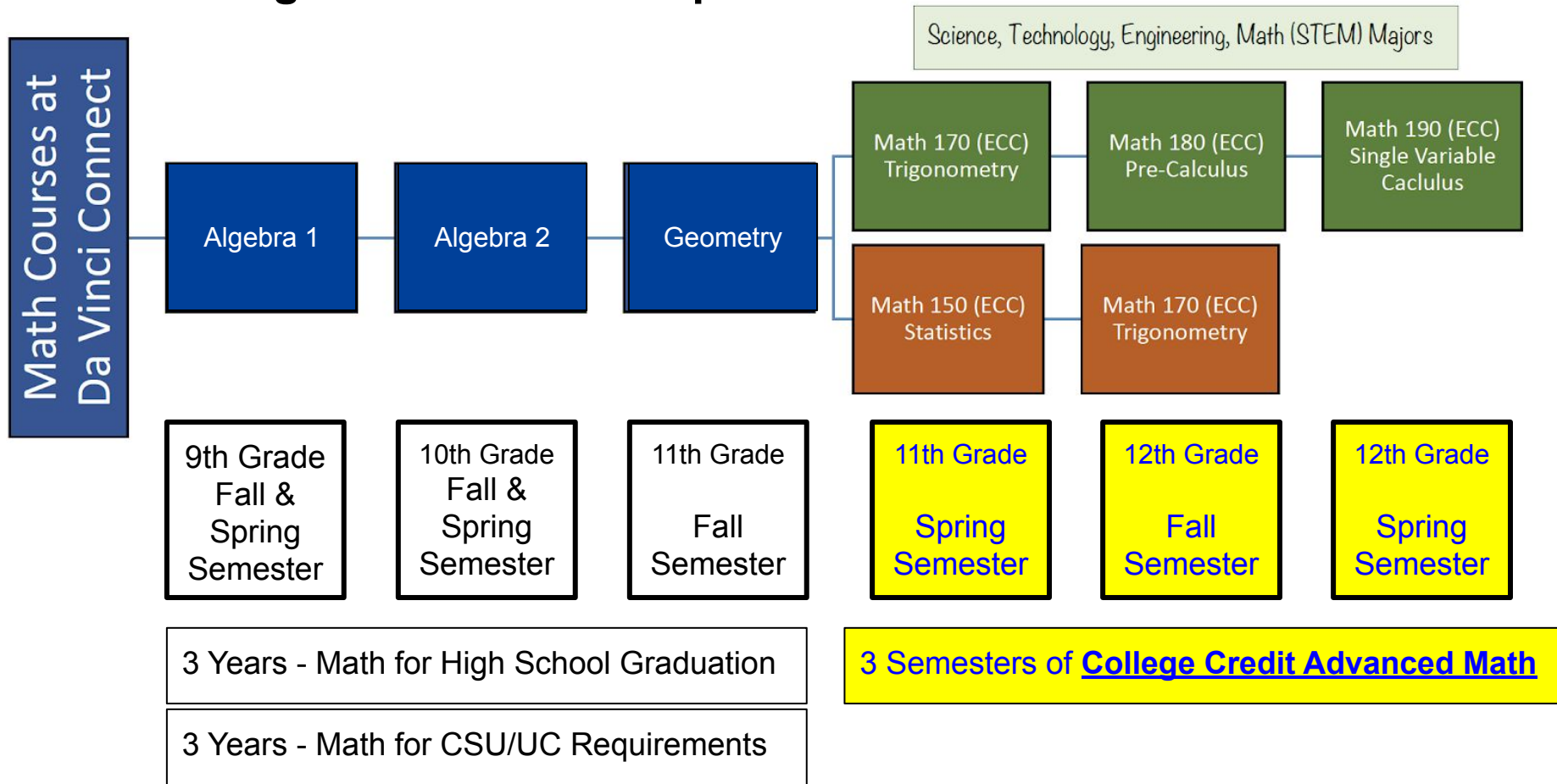
## 12th Grade Semester 1

Art 110 (ECC)  
World Language (ECC)  
ECC elective or SNHU BA

## 12th Grade Semester 2

Government  
English 12  
ECC elective or SNHU BA

# Connect High School Math Sequence



Note: Students are not required to take college advanced math courses but must complete at least 3 years of math.

# DV Connect High: Sample 9th Grade Mon/Thu Semester 1 Schedule

	Monday	Tuesday	Wednesday	Thursday	Friday
<b>Check-in SEL</b> <b>9:15-9:30</b>	SEL Activity with Period 1			SEL Activity with Period 1	
<b>Period 1</b> <b>9:30-10:50</b>	<b>English 9</b>	70 minutes of work in Period 1, 2, <b>OR</b> 3 <b>OR</b> Office Hours Your Choice at home	70 minutes of work in Period 1, 2, <b>OR</b> 3 <b>OR</b> Office Hours Your Choice at home	<b>English 9</b>	70 minutes of work in Period 1, 2, <b>OR</b> 3 <b>OR</b> Office Hours Your Choice at home
<b>Break</b>	<b>Break</b>			<b>Break</b>	
<b>Period 2</b> <b>11:00-12:20</b>	<b>Algebra 1A</b>	70 minutes of work in Period 1, 2, <b>OR</b> 3 <b>OR</b> Office Hours Your Choice at home	70 minutes of work in Period 1, 2, <b>OR</b> 3 <b>OR</b> Office Hours Your Choice at home	<b>Algebra 1A</b>	70 minutes of work in Period 1, 2, <b>OR</b> 3 <b>OR</b> Office Hours Your Choice at home
<b>Lunch 12:20-1:00</b>	<b>Lunch 12:20-1:00</b>			<b>Lunch 12:20-1:00</b>	
<b>Period 3</b> <b>1:00-2:20</b>	<b>SNHU College Classes</b>	70 minutes of work in Period 1, 2, <b>OR</b> 3 <b>OR</b> Office Hours Your Choice at home	70 minutes of work in Period 1, 2, <b>OR</b> 3 <b>OR</b> Office Hours Your Choice at home	<b>SNHU College Classes</b>	70 minutes of work in Period 1, 2, <b>OR</b> 3 <b>OR</b> Office Hours Your Choice at home
<b>Break</b>	<b>Break</b>			<b>Break</b>	
<b>Advisory</b> <b>2:30-3:15</b>	<b>Advisory</b>	Office Hours <b>OR</b> Advisory work time *as needed	Office Hours <b>OR</b> Advisory work time *as needed	<b>Advisory</b>	Office Hours <b>OR</b> Advisory work time *as needed

Note: This is a 5 day a week program with on campus instruction M/Th and at home asynchronous learning T/W/F.

# DV Connect High: Sample 9th Grade Tue/Fri Semester 1 Schedule

	Monday	Tuesday	Wednesday	Thursday	Friday
<b>Check-in SEL</b> <b>9:15-9:30</b>		SEL Activity with Period 1			SEL Activity with Period 1
<b>Period 1</b> <b>9:30-10:50</b>	70 minutes of work in Period 1, 2, <b>OR</b> 3 <b>OR</b> Office Hours Your Choice at home	<b>English 9</b>	70 minutes of work in Period 1, 2, <b>OR</b> 3 <b>OR</b> Office Hours Your Choice at home	70 minutes of work in Period 1, 2, <b>OR</b> 3 <b>OR</b> Office Hours Your Choice at home	<b>English 9</b>
<b>Break</b>		<b>Break</b>			<b>Break</b>
<b>Period 2</b> <b>11:00-12:20</b>	70 minutes of work in Period 1, 2, <b>OR</b> 3 <b>OR</b> Office Hours Your Choice at home	<b>Algebra 1A</b>	70 minutes of work in Period 1, 2, <b>OR</b> 3 <b>OR</b> Office Hours Your Choice at home	70 minutes of work in Period 1, 2, <b>OR</b> 3 <b>OR</b> Office Hours Your Choice at home	<b>Algebra 1A</b>
<b>Lunch 12:20-1:00</b>		<b>Lunch 12:20-1:00</b>			<b>Lunch 12:20-1:00</b>
<b>Period 3</b> <b>1:00-2:20</b>	70 minutes of work in Period 1, 2, <b>OR</b> 3 <b>OR</b> Office Hours Your Choice at home	<b>SNHU College Classes</b>	70 minutes of work in Period 1, 2, <b>OR</b> 3 <b>OR</b> Office Hours Your Choice at home	70 minutes of work in Period 1, 2, <b>OR</b> 3 <b>OR</b> Office Hours Your Choice at home	<b>SNHU College Classes</b>
<b>Break</b>		<b>Break</b>			<b>Break</b>
<b>Advisory</b> <b>2:30-3:15</b>	Office Hours <b>OR</b> Advisory work time *as needed	<b>Advisory</b>	Office Hours <b>OR</b> Advisory work time *as needed	Office Hours <b>OR</b> Advisory work time *as needed	<b>Advisory</b>

Note: This is a 5 day a week program with on campus instruction T/F and at home asynchronous learning M/W/Th.

# DV Connect High: **OPPORTUNITY:** EXTRA ASYNCHRONOUS SUPPORT via ZOOM at HOME AND/OR ADDITIONAL DAYS ON CAMPUS

	Monday	Tuesday	Wednesday	Thursday	Friday
Check-in SEL 9:15-9:30	SEL Activity with Period 1			SEL Activity with Period 1	
Period 1 9:30-10:50	English 9	<b>ZOOM or On Campus Support</b>	70 minutes of work in Period 1, 2, <b>OR</b> 3 <b>OR</b> Office Hours Your Choice at home	English 9	<b>ZOOM or On Campus Support</b>
Break	Break			Break	
Period 2 11:00-12:20	Algebra 1A	<b>ZOOM or On Campus Support</b>	70 minutes of work in Period 1, 2, <b>OR</b> 3 <b>OR</b> Office Hours Your Choice at home	Algebra 1A	<b>ZOOM or On Campus Support</b>
Lunch 12:20-1:00	Lunch 12:20-1:00			Lunch 12:20-1:00	
Period 3 1:00-2:20	SNHU College Classes	<b>ZOOM or On Campus Support</b>	70 minutes of work in Period 1, 2, <b>OR</b> 3 <b>OR</b> Office Hours Your Choice at home	SNHU College Classes	<b>ZOOM or On Campus Support</b>
Break	Break			Break	
Advisory 2:30-3:15	Advisory	Office Hours <b>OR</b> Advisory work time *as needed	Office Hours <b>OR</b> Advisory work time *as needed	Advisory	Office Hours <b>OR</b> Advisory work time *as needed

# DV Connect Building Community



*Clubs*

*Da Vinci Schools*



**Clubs**

**Da Vinci Connect**



*Sports*

*WDV Athletics*



**Community**

**Dialogue**

**Da Vinci Connect**



**Advisory**

**Da Vinci Connect**



**Orientation**

**August- TBA**



**School begins in  
mid-August 2022!**





# Enrollment

## DV Connect Enrollment Priorities

SchoolMint generates priorities in the following order as outlined in the Connect charter petition and authorized by state law:

1. Wiseburn Residents
2. Siblings of currently enrolled Da Vinci Connect students in grades TK-11
3. Children of Da Vinci and Wiseburn teachers, staff, and Board members (not to exceed 10% of enrollment)
4. Students who are currently attending Wiseburn K-8 schools on permit (entered district in K-5)
5. Students who are currently attending Wiseburn K-8 schools on permit (entered district in 6th grade)
6. All Others

# Enrollment

## Application



- **Interested in applying to DV Connect HS?**
  - ❑ Submit an application through SchoolMint -- [davincischools.schoolmint.net](https://davincischools.schoolmint.net)
    - Only ONE application per student (you'll be asked to rank your s preference)
- **Already submitted an application but want to add DV Connect HS as your 1st choice?**
  - ❑ Contact our Enrollment Department at [enrollment@davincischools.org](mailto:enrollment@davincischools.org) and let us know!

*Questions? Contact us at (310) 331-8097 or [enrollment@davincischools.org](mailto:enrollment@davincischools.org)*

# Intra-School Transfers

## Transfers **from** DV Connect to Da Vinci Communications, Da Vinci Design and Da Vinci Science

Students in grades 9-11 attending Da Vinci Connect who wish to transfer to Da Vinci Communications, Da Vinci Design or Da Vinci Science must:

1. Apply as a new applicant (on SchoolMint) to Da Vinci Communications, Da Vinci Design or Da Vinci Science. The student shall be admitted pursuant to the school's respective charter petition and applicable policies.
2. Submit an Intra-School Transfer Request Form to [enrollment@davincischools.org](mailto:enrollment@davincischools.org) (form is available upon request)

## Transfers **to** DV Connect from Da Vinci Communications, Da Vinci Design and Da Vinci Science

Students in grades 9-11 attending Da Vinci Communications, Da Vinci Design or Da Vinci Science who wish to transfer to Da Vinci Connect HS, should submit an Intra-School Transfer Request Form to [enrollment@davincischools.org](mailto:enrollment@davincischools.org) (form is available upon request)

# Q&As

## Thank you!!

Marc Pioch  
Principal  
mpioch@davincischools.org

Dr. Kimberly Johnson  
Assistant Principal  
kjohnson@davincischools.org