



DA VINCI
SCHOOLS

Town Hall Meeting

July 16, 2020

Dr. Matthew Wunder
Chief Executive Officer

Dr. Jennifer Hawn
Chief Administrative Officer

Vicente Bravo
Chief Administrative Officer

In the News...

“California campuses likely to remain closed amid coronavirus spike, state schools chief says.”

With the first day of school just weeks away, California campuses should be prepared to offer distance learning instead of in-person instruction if coronavirus conditions don't improve, state Supt. of Public Instruction Tony Thurmond said Wednesday.

The state reported its largest number of new infections in a single day Tuesday, hospitalizations hit a new high and deaths approached record levels.

The 11,142 cases recorded Tuesday were easily the most confirmed in any one day since the pandemic began, surpassing the previous record of 9,816 on July 9.”

Zoom Meeting Norms

Recording

We are recording so that we can ensure use of your input.

Chat

The Chat is open and visible to all. Please feel free to add your thoughts & questions.

Mute

Other than when asking a question or providing input, please mute yourself.

Questions

We will respond to your questions today and will update you throughout the summer.

Share

Please share our time with others so that everyone has a chance to ask questions or provide input.

Thank you!

Thank you for your participation!

PURPOSE & AGENDA

01. Purpose

Update on DV planning for fall;
gather stakeholder input regarding
'Phased-In Hybrid' Plan

02. Pandemic Progress

Changes in the law, state
guidance, and the state of the
pandemic

03. What We've Learned

Schedules, Programs &
Practices Evolved March - June

04. Summer Planning

Survey Data, Design Teams,
Stakeholder Input Meetings; Teacher
Planning & Professional Development

05. Guiding Principles

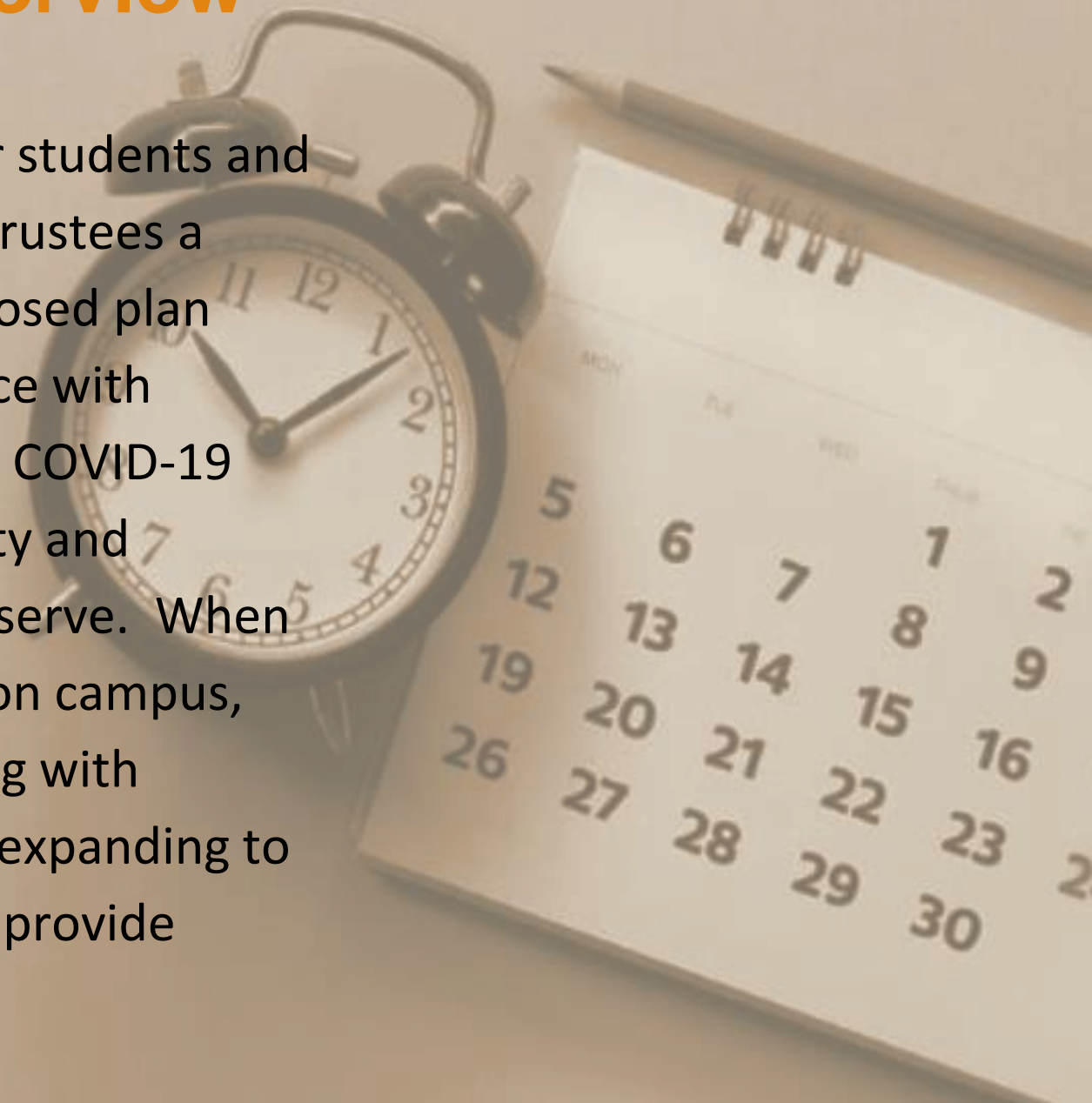
Safety (PPE, Facilities), High-Quality
Instruction, Social Emotional Supports,
Special Needs, Students & Staff
Considerations

06. Poll & Additional Thoughts

Thoughts Now & Later

Recommended Plan - Overview

Based on the health and safety needs of our students and staff, we will be proposing to our Board of Trustees a phased re-opening of our schools. The proposed plan begins with all-remote learning in accordance with guidance from public health officials, recent COVID-19 data, and the need to provide as much clarity and certainty as we possibly can to all those we serve. When it becomes safe to bring students and staff on campus, we will phase in on-campus learning, starting with essential instructional support services and expanding to more students when public health agencies provide guidance that it is safe to do so.



Guiding Principles

01

Student and Staff
Safety - CDPH
Guidelines

02

Facilities, Food
Services & PPE

03

Instructional Options:
high-quality, special
needs, & learning
loss/recovery

04

Student, Family & Staff
Training

05

Social-Emotional
Supports for Students

06

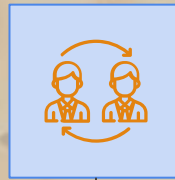
Ability to Pivot as
needed: On-Site,
Hybrid, All-Remote

Instructional Delivery Models



In Person/On Site

Return to Pre-Pandemic models



Hybrid

Distance Learning instruction, with some in-person/on campus learning



Remote Learning

100% remote

Families can always opt for all-remote....even if we move to a hybrid model

Expert Guidance

- SB 98 (law enacted June 29, 2020)
- LA County Department Public Health Guidelines *July 13, 2020*
- LA County Department of Public Health Roadmap to Recovery - *June 1, 2020*
- LA County Office of Education Framework *May 27, 2020*
- CDC Guidance for Cleaning and Disinfecting *April 28, 2020*
- CA Department of Public Health Back to School Guide – *June 5, 2020 (updated June 18, 2020)*
- CDE Back to School Guide – *June 8, 2020*
- CA School Nurses Organization Health Recovery Guide – *June 25, 2020*
- Collaboration with neighboring schools and districts



**Los Angeles County
Office of Education**



Design Process

- ❖ Staff Design Thinking & Planning Workshops, PD
- ❖ Leadership Team Meetings
- ❖ Parent/Guardian Surveys
- ❖ Staff Surveys and Meetings
- ❖ Student Surveys, Zoom Calls, Office Hours
- ❖ Stakeholder Input Meetings





Parent/Guardian Stakeholder Surveys

Return to Campus Survey - June 4, 2020

- 538 responses
- 54% prefer in-person learning, 44% hybrid, 16% full remote, 17% not sure

Fall 2020 Planning Survey - July 8, 2020

- 964 responses
- 61% prefer hybrid, 39% full remote

“We need in-person learning back!”

“Remote learning has been extremely beneficial to my daughter’s study habits and it has allowed her to concentrate on each subject area without disruption.”

“I support the school in following guidelines in reopening. I also think it’s a good idea to have a hybrid option.”

Health & Safety

Stakeholder Feedback

Anonymous 5d

Virtual & Hybrid options seems to be the norm for fall:

<https://www.latimes.com/california/story/2020-07-10/school-reopening-coronavirus-spike-parents-teachers-split>

Add comment

Anonymous 9d

When a student or teacher gets COVID-19, what are the next steps? Would the floors be quarantined individually or would the whole building be shut down?

3 comments

Anonymous 9d

Will testing be available for teachers? It is not easy to get tested through the county. If they are exposed to all the students, they could potentially be spreading the virus to all the students.

Anonymous 8d

Would teachers have access to free weekly C19 testing?

Anonymous 8d

Virtual

I don't understand why we are rushing to go back in August when we can safely stay virtual and reimagine education and come back in January with a well thought out, safe, tech savvy, hybrid program. Virtual reality is everywhere now, why aren't schools using it to engage the kids? That would be something that would for sure get my kids off video games and into their learning.

1 comment

Anonymous 6d

My kids would go nuts for that. I wonder what the cost is...

Add comment

Anonymous 9d

About how many minutes of in-person instruction would students get per class with the hybrid model?

Anonymous 7d

Concerns:

What happens when a teacher gets sick and there's a steady stream of subs?

Are there air purifiers being input?

What happens when your kid gets a common cold but is then needed to be kept out of school for 2wks?

What improved interactive hybrid system is being put in place when kids are out? Are you looking into other options for technology?

How do kids learn effectively while wearing masks and distancing with no small group or collaborative projects?

The classroom aren't big enough to space out 10 kids 6ft apart each... where will they learn?

How are students and teachers with breathing sensitivities going to keep masks on for 8 hrs, will you be providing masks that have safe ventilation?

Why aren't outdoor classrooms being explored?

Anonymous 8d

High risk, questionable reward

Having more than 1 person who is at increased risk to develop complications in our family, we have already decided that our daughter will be remote learning for the foreseeable future. We discussed it with her and she agrees. We just can't see how all of these safety protocols will be sustainable for a long period of time. It only takes one lapse and there could be an outbreak among students, teachers, and family members. We feel that the teachers did an outstanding job with the remote learning on very short notice last year and are confident that continuing in that fashion would be in everyone's best interest. We also feel that any classroom setting would be detrimental to both the students and the teachers as it not only puts them at risk of contracting the virus, but also increases their workload and stress of having to follow all of these additional steps.

Stakeholder Input Meetings

Org-Wide Parent/Guardian Input Meetings (July 6-9)

- Facilities & Operations (Health & Safety)
- Social Emotional Supports
- Instructional Delivery
- Communication with Families
- Technology
- Athletics

School Site Parent/Guardian Input Meetings

Student Input

Questions/comments submitted to our Padlets

Instructional Delivery - Common Threads

- **Common Method for Accessing Assignments/Deadlines (a “one-stop shop”)**
- **Consistency in Schedule for Students; Consistency of Expectations for Synchronous vs. Asynchronous Learning**
- **Training for Students (& Parents) on Expectations and Tech, Procedures, & Protocols**
- **Incoming 9th Grade Orientation**

Questions/comments submitted to our Padlets

Social Emotional Supports - Common Threads

- **Building Social Connections: Teacher to Student, and Student to Student**
- **Social Emotional Support Learning - Building into Instructional Time**
- **Structured Time for Students to Connect (Social, Test Prep, etc.)**
- **Buddy System for Incoming Freshmen**

Questions/comments submitted to our Padlets

Communications with Families - Common Threads

- **Student participation in the decision-making**
- **Coordinating and aligning school schedules with Wiseburn Unified**
- **Utilizing a variety of different platforms for communication**
- **Communicating COVID-19 cases, class/school closures, how to show compassion/care to families affected by COVID**

Questions/comments submitted to our Padlets

Health & Safety - Common Threads:

- **Safety Concerns with On-Campus Learning**
- **Safety Precautions for Students & Staff**
- **Integrating Physical Activity in Remote Learning**
- **Monitoring and Ensuring Physical Distancing of Students**
- **Screening and Monitoring of Student Health & Wellness**

Questions/comments submitted to our Padlets

Technology - Common Threads

- **Using Google Classroom and Other Online Learning Portals for Remote Learning**
- **LMS/Single Sign-On (Canvas vs. Google Classroom vs....)**
- **Protecting Student Privacy Online**
- **Creating Norms Around Digital Citizenship**

Questions/comments submitted to our Padlets

Athletics - Common Threads

- **Latest News Regarding CIF Sports for the 2020-21 School Year**
- **Cleaning of Gym and Athletic Facilities**
- **Athletics Staffing**
- **Athletic Practices**
- **Health & Safety Guidelines as it pertains to practices, games, parent participation**

'Phased-In Hybrid' Plan

Professional Development/Planning (Aug 1-14)	All DV schools will come together for PD Planning in groups
Phase 1 (Aug 17-31)	Remote Instruction
Phase 2 (Sept. 1 - Oct. 2)	Hybrid Learning with identified students returning to campus for "Essential Services" as defined during PD/Planning
Phase 3 (Oct. 5 - Winter Break)	Hybrid Learning with students returning for essential services and additional on-campus activities that are highly difficult to offer anywhere but school

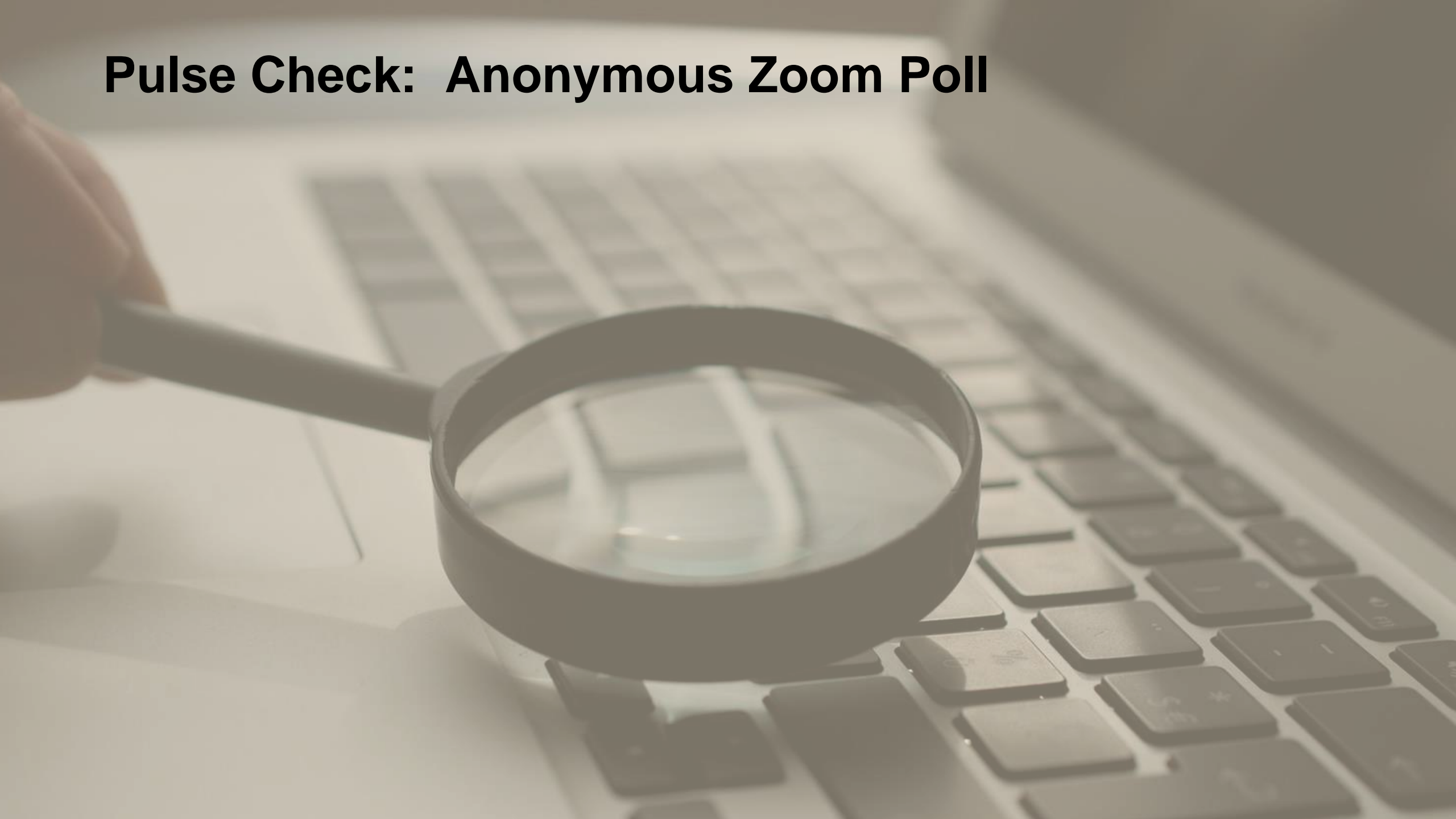
'Phased-In Hybrid' Plan

Professional Development/ Planning (Aug 1-14)

All DV schools will come together for PD Planning in groups for coordination and efficiency:

- *How to Be An Anti-Racist* Organizational Read/Anti-Racism Teaching Practices
- Remote Learning Best Practices (with an equity lens)
- Re-Engagement Strategies for Students who Struggled with Distance Learning

Pulse Check: Anonymous Zoom Poll



Home / Coronavirus (COVID-19) Updates

Coronavirus (COVID-19) Updates

Da Vinci Schools is **continuing with remote instruction through the summer due to the ongoing coronavirus outbreak**. Our priority remains to do our part to protect the health and well-being of our students, staff, and the greater community.

Our teachers, counselors, school leaders, IT team and classified staff have done exceptional work to keep our students engaged, learning and connected during this challenging time. We continue to implement best practices in distance learning while tapping into some of the country's exemplary learning networks of which we are members, as well as to learn from our internal experts at Da Vinci Connect, DVX, and RISE who have been highly successful in blending in-person and remote learning for years.

Coronavirus Update: Fall 2020 Planning & School Reopening Update (July 2, 2020)	+
Coronavirus Update: P-EBT Card Application Deadline Extended – Get Up to \$365 Per Child for Groceries (June 30, 2020)	+
Coronavirus Update: Summer Food Service (June 12, 2020)	+
Coronavirus Update: Pandemic Food Benefits. Eligible families will receive up to \$365 per child. Apply by June 30 (May 22, 2020)	+

RESOURCES

[Learn More About Coronavirus](#)

[Talking to Children About COVID-19](#)

[CA Department of Public Health](#)

[LA County Department of Education](#)

[LA County Department of Public Health](#)



Fall 2020 Planning & School Reopening Update

Dear Da Vinci Families,

I wish everyone a good start to summer. I also recognize the challenges that so many in our community are facing. The 2019-20 school year was anything but typical. I am deeply proud of our Da Vinci community of students, families, faculty and staff who have done exceptional work to keep our students engaged and connected during this challenging time.

Today, I am writing to update you about our plans for welcoming students back to our campuses in Fall 2020, informed by guidelines from the L.A. County Department of Public Health, the Los Angeles County Office of Education, the California Department of Public Health, and the California Department of Education.

Summer Planning
Our school leaders and Central Office team are dedicating themselves to thoughtfully preparing for the reopening of our schools in Fall 2020. Our goals are to: (1) keep our students and faculty/staff healthy and safe; (2) keep our community together; and (3) optimize our learning environments to deliver high-quality learning experiences within the required health and safety guidelines for school reopening.

Families play an important role in informing our decision-making. Organizational and school site surveys have been sent to all families. The org-wide survey received 538 responses and 167 parents/guardians volunteered to provide additional input to our reopening committees.

Home / Fall 2020 Planning Update

Fall 2020 Planning Update

Find out more about our Fall 2020 Planning. We are deeply grateful to all the parents, students and staff who continue to provide their ideas, input and wisdom with us. Please continue to share your thinking with us via the Padlet communication tool (links below).

- Facilities and Operations (Health & Safety)**
[Slide Deck / Padlet](#)
- Social Emotional Supports**
[Slide Deck / Padlet](#)
- Instructional Delivery**
[Slide Deck / Padlet](#)

> COVID-19 Updates, Resources and Fall 2020 Planning info posted on our website at: www.davincischools.org

www.davincischools.org/fall-planning

**FINAL
THOUGHTS?**

